



The Best in Pests™

RODENT RADAR

A Guide To Help
Protect Your Business
From Rodents



RODENTS ARE EVERYWHERE. SO IS THEIR DAMAGE.

Did You Know:

There are approximately 2,500 species of rodents, and they make up 40 percent of mammals worldwide. Rodents live on nearly every continent, thriving in most climates and seasons. Unfortunately, they are also very destructive pests.

Why It Matters:

From product contamination and disease transmission to physical damage created by their ability to chew and burrow, rodents can become an expensive problem that could harm your products, people and reputation.

What's Next:

As a leader, you're doing the right thing protecting your business with general pest control, but rodents require special attention and prevention from a provider experienced in rodent control. With the right plan and a trusted pest control provider, you can take charge of rodent issues with absolute confidence. This guide covers all your rodent questions and outlines what our Orkin Pros™ think you should know to help keep rodents out of your business.

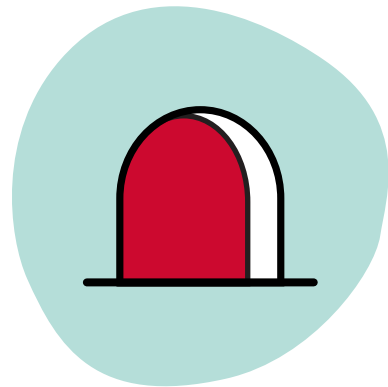
You'll Learn:

- ◆ What's Threatening About Rodents
- ◆ Rodent Attractants
- ◆ Top 5 Signs of Rodent Infestation
- ◆ The Consequences of Rodents
 - ◇ Commercial Damage
 - ◇ Harm to Humans
- ◆ How To Help Get Rodents Under Control
- ◆ Common Commercial Rodent Species

Those who have faced the damages and dangers rodents pose to employees, customers and properties know that rodents deserve a place on their radar. Read on to learn more about real rodent threats from the pest control partner who knows rodents best.

WHAT'S THREATENING ABOUT RODENTS

Rodents' unique characteristics make them excellent business disruptors. Here are a few of the traits that help rats and mice enter commercial facilities and make themselves at home:



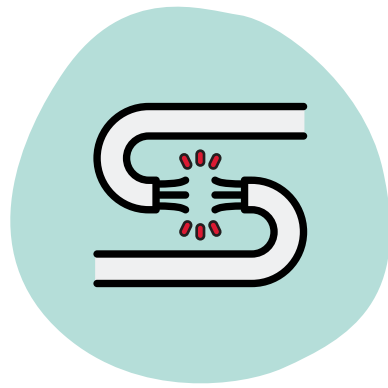
Shape Shifters

With bodies that are mostly cartilage, mice can squeeze through holes that measure the size of a dime, while rats can contort themselves into shapes as small as a quarter. If their head fits, their body will fit.



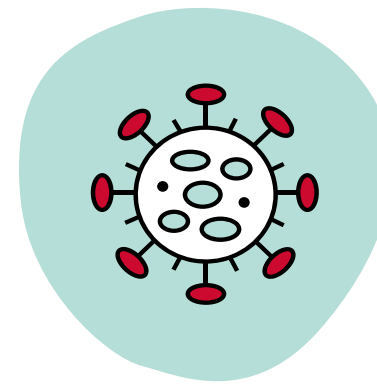
Big Breeders

Most rats and mice can produce multiple litters a year with several pups each, resulting in a problem that can literally multiply — and quickly.



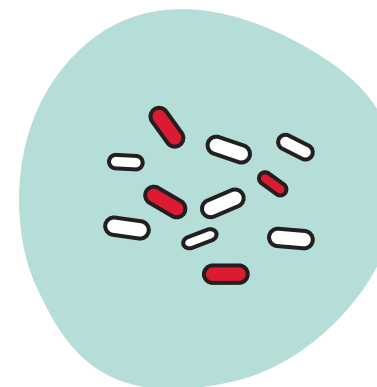
Destructive Chewers

Rodents' incisors are constantly growing, so they must chew on anything and everything to wear down growth and keep their teeth sharp.



Disease Spreaders

According to the [National Pest Management Association \(NPMA\)](#), rodents are known to directly and indirectly transmit 200 pathogens and 35 diseases, including leptospirosis (also called Weil's disease), salmonellosis, typhus and even plague. They can also trigger allergies and asthma symptoms.



Constant Contaminators

Rodents can produce a significant amount of fecal and urine waste. In fact, on average, a mouse can produce about 50-75 pellets of fecal matter a day while exploring their environment.

RODENT ATTRACTANTS

Rodents can infest any facility, but some factors make infestation more likely. Learn how to spot the tell-tale signs of a rodent issue and identify causes.

The Issue

No matter the industry, most business facilities present the same appeal to pests: they offer food, water and shelter. Additionally, customers and employees who are coming and going can increase the chances of an infestation, thanks to open doors and left-out food.

The Causes

- ◆ Clutter and neglected materials
- ◆ Food and garbage odors
- ◆ Improperly sealed doors and other openings
- ◆ Overgrown landscaping
- ◆ Poorly maintained walls, foundations and roofs
- ◆ Standing water
- ◆ Unattended food



The Danger Zones

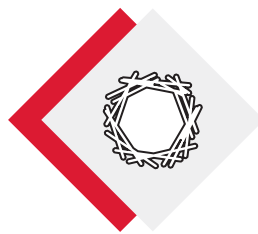
- ◆ Any space that provides food, water or shelter
- ◆ Break rooms
- ◆ Cafeterias
- ◆ Cluttered backrooms, basements, cabinets and offices
- ◆ Coffee stations
- ◆ Custodial closets
- ◆ Roofs of coolers and freezer boxes
- ◆ Stock rooms, stored product areas and shelving units
- ◆ Vending machines
- ◆ Wall, floor and ceiling voids
- ◆ Warm, suspended ceilings

TOP 5 SIGNS OF RODENT INFESTATION

If you notice evidence of rodent activity, it's time to alert your pest control provider to help deal with the issue immediately. Here are the top five indicators to watch for:



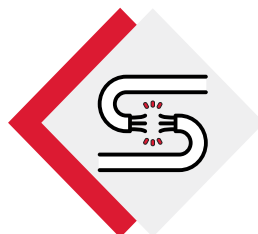
Droppings: Keep your eyes peeled for capsule-like pellets, which are signs that rodents are using your business as a bathroom.



Nests: Nests are where rats and mice take shelter and store food. They are often made of shredded material, including paper and cloth.



Grease trails: Oil and dirt in rodent fur leave behind dark grease marks on walls, cracks and runways.



Gnaw marks: Be on the lookout for chew marks on packages, walls, insulation, wires, flooring, pallets and products in your facility.



Burrows: While some rodents prefer the roof, others like to stay close to the ground, burrowing underneath buildings, walls and fences.



THE CONSEQUENCES OF RODENTS: COMMERCIAL DAMAGE

You can't afford to leave rodents off your radar. The presence of rodents can harm people, places or the public's perception of your business, with destructive potential that can lead to real-life costs to your bottom line.

Damage to Food

Globally, [30% of crops are destroyed](#) pre- and post-harvest by rodents, and rodents in a food facility can easily [demolish pounds of food per week](#). Though product consumption can cause frustrating losses, contamination can create even more complex problems. Rats and mice shed a lot of hair, and their [fecal matter can contaminate](#) surfaces and spread to food storage — leading to sickness (like food poisoning), shutdowns, fines and recalls.

Damage to Reputation

A rodent sighting can ding a business's reputation, cutting into the bottom line. In several states, evidence of live rodents in a food facility will result in a shutdown until the issue is resolved. [A study conducted by LinkedIn](#) estimated that brands with poor public perception can lose thousands of dollars per month due to the inability to attract and keep employees, let alone the customers and revenue lost through bad word of mouth.



Damage to Structure

Rodents' teeth are strong enough to cause significant damage around your property, and their gnawing [can even initiate fires when electrical insulation is chewed](#). Moreover, rodents may choose to tunnel into your walls and ceilings, damaging the insulation inside. Across commercial buildings, rodents are capable of chewing through:

- ◆ Aluminum sheathing
- ◆ Electrical wires
- ◆ Mortar
- ◆ Sheet rock
- ◆ Soft metals, including lead and copper
- ◆ Water pipes
- ◆ Walls, floors, windowsills and doors

THE CONSEQUENCES OF RODENTS: HARM TO HUMANS

Diseases can spread directly through a rodent bite or pass indirectly through droppings, urine, saliva and blood. Rodents can also bring disease carriers — like fleas, ticks or mites — with them and into contact with humans. The most common diseases and methods of transmission from rodents are:

Disease	Transmission	Key Facts
Food Poisoning (including salmonellosis)	Rat and mice feces contaminates kitchen surfaces or food storage.	Ingesting contaminated food could lead to diarrhea, nausea and intestinal disorders.
Hantavirus	Rodents' feces, urine or saliva, particularly those originating from deer mice, come in contact with humans or is breathed in.	A dangerous respiratory illness with 850+ cases and an average mortality rate of 35%.
Plague (including bubonic and septicemic plagues)	Rodents carrying infected fleas leave behind contaminated fluids or tissue, which comes into contact with humans.	Annually, there are about 1,000–2,000 cases worldwide with a 10% mortality rate.
Rat-Bite Fever	Bacteria in the mouths and noses of rats and mice are transmitted to humans via bite.	Untreated, the mortality rate of this infectious disease is as high as 10%.
Leptospirosis	Rodent urine gets into water or soil and can survive there for weeks or even months, and then comes into contact with humans.	Many symptoms can be mistaken for other diseases. Illness can last from a few days to several weeks. Untreated, recovery may take months.
Flea-borne (murine) typhus	Fleas become infected when they bite infected animals, such as rodents, and then transmit flea-borne typhus to humans via contact.	Symptoms begin within two weeks of transmission. Generally rare in the U.S., although an outbreak was reported in Los Angeles in 2021 .



HOW TO HELP GET RODENTS UNDER CONTROL

A customized Integrated Pest Management (IPM) strategy will ensure the right approach — including services, treatments and equipment — to help your business. Here are some of the tools that your pest control provider might use to combat rodents:

Inspection

Start with [The Danger Zones](#), paying particular attention to hard-to-reach areas and spaces that may contain traces of food.

- ◆ **Pro Tip:** Remember, you may not see an actual rodent, but you may see signs of them.

Exclusion

Rats and mice can enter through extremely tight openings, so it's essential to seal off all entry points. Utilizing physical methods (exclusion) to help keep rodents from getting inside your facility is the best way to avoid an infestation. Install door sweeps, seal cracks in your building's exterior and eliminate gaps around utility lines and boxes. Once you're done with the ground floor, look up. Roof rats and mice can access high areas in or around your facility.

- ◆ **Pro Tip:** Think of sewers as highways for rats. Install pest-proof exterior vents and drains using metal mesh.

Declutter

Cluttered spaces provide the materials and cover rodents need to thrive. Be sure to regularly clean out interior and exterior spaces, including desk drawers, vending machines and break rooms.

- ◆ **Pro Tip:** If rodents are present, a deeper clean with your pest control provider may be necessary to remove rodent urine, droppings and hairs that can contaminate spaces, spread diseases and attract more pests.

Sanitation

Standing water and food are rodent siren calls. It is important to empty garbage bins, clean out dumpsters, fix leaks and eliminate standing water.

- ◆ **Pro Tip:** Rodents don't just rely on human food. Make sure to account for nearby food sources like birdseed, nuts, berries and honeycombs.

Ongoing Maintenance

Pests don't quit. A tailored maintenance plan backed by consistent monitoring, detailed documentation and staff training can help you stay on top of potential threats. Keep the lines of communication open between your staff, facility maintenance team and a trusted pest control provider.

- ◆ **Pro Tip:** Additional rodent trapping and removal may be necessary for your treatment plan.

Electronic Monitoring

If you're struggling to keep rodents out of your business, you may want to explore the latest technology to monitor these unwanted pests. Electronic rodent monitoring (ERM) systems identify rodent activity in and around your facility in real-time to help protect you from costly rodent infestations before they occur, giving your business added protection when the stakes are high.

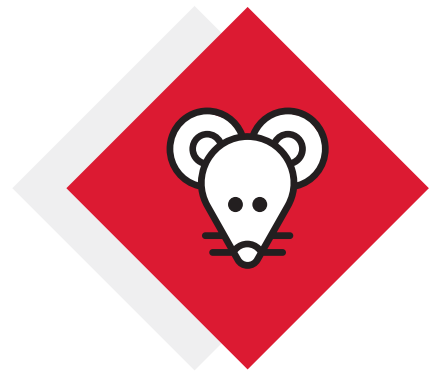
- ◆ **Pro Tip:** ERM traps can fit in hard-to-reach — and even harder-to-monitor — areas so your pest control provider can help minimize blind spots.

COMMON COMMERCIAL RODENT SPECIES

You keep a vigilant eye on your facility every day.
Be sure you know what you're looking for — these
are the most common species of destructive rodents.



HOUSE MOUSE

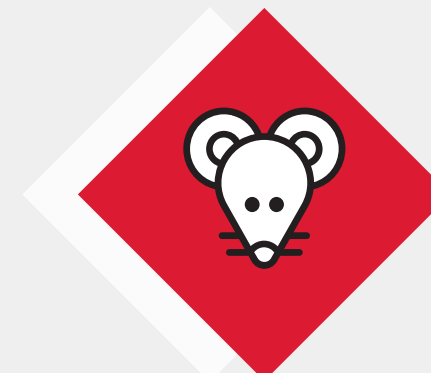


About: Despite their name, house mice are known to infest restaurants, hotels, schools, food plants, hospitals, offices and even modes of transportation. Simply put: house mice make our nests their nests.



Appearance: Five to eight inches in length, including their tails, house mice have short hair, moderately large ears and tails the length of their head and body combined.

NORWAY RAT



About: Because of their large size — up to 19 inches with their tails — and aggressive behavior, the Norway rat is also referred to as “Super Rat” or “King Rat.”

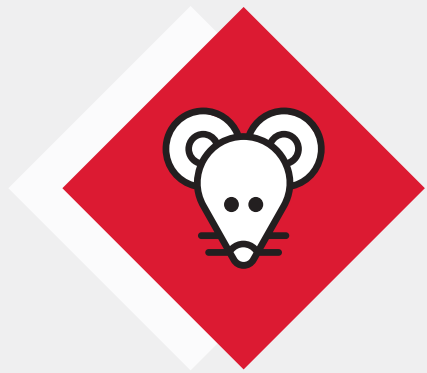


Appearance: Norway rats are distinguishable from other rodents because their tails are shorter than their large bodies. Shaggy, grayish-brown hair covers their bodies.

ROOF RAT



About: Known for their climbing abilities, roof rats prefer dwelling in high places like attics, rafters and trees. Roof rats can be found on the West Coast, in southern states along the East Coast up to the Chesapeake Bay and in large swaths of the southeastern U.S.



Appearance: These medium-sized rats are either black or brown and are about six to eight inches long, including their tails.



DEER MOUSE



About: Deer mice remained largely under the radar until 1995, when a deadly outbreak of Hantavirus spread across the southwest. Deer mice were eventually deemed the transmitters of this dangerous respiratory illness.



Appearance: Deer mice are small, with short tails and large ears. They typically have pointed noses, large black eyes and a bicolored, small body.



If you've ever faced the damages and dangers rodents pose to customers, employees and commercial properties, you know that rodents deserve a place on your radar. Though rodents are serious issues that can wreak havoc on your business, a trusted pest control provider and tailored IPM plan can help you feel absolute confidence in the state of your facility and anyone who visits it.

For more information on [rodent control](#), schedule a free inspection with an expertly trained Orkin Pro™. With more than 120 years of pest control experience — which began with rat baiting — Orkin Pros are equipped with the tools, resources and expertise to create a custom, comprehensive pest control program that addresses the root causes of rodents and helps keep them out of the places that matter most to you.

Are Rodents On Your Radar?

[Set up a free inspection with an Orkin Pro today.](#) ■

